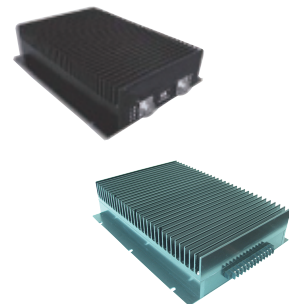


特性 Features

- 宽电压输入范围 Wide range of input voltage
- 输入宽频噪声滤波 Broadband noise filter of input
- 输入浪涌电流抑制电路 Surge suppress circuit of input
- 符合 UL1950、IEC950 安全规程 Comply with UL1950, IEC950 safety regulation
- 外型设计美观 Attractive outline design
- 接线端子出线方式 Terminals connection method
- 安装方便 Easy installation
- 快速动态响应 Fast dynamic response



输入特性 Input Characteristic

电压范围 (Voltage Range)	220 VAC (额定值)	85-265 VAC 176-264 VAC	反压保护 (Reverse Protection)	应用时外接熔丝 (Fuse Outside)
-------------------------	---------------	---------------------------	------------------------------	---------------------------

输出特性 Output Characteristic

电压精度 (Voltage Set-point Accuracy)	± 1%	响应速度 (Dynamic Response)	400μs
电压调整率(主路) (Line Regulation<main>)	± 0.2%	输出电流 (Output Current)	13-66A 任选
负载调整率(主路) (Load Regulation<main>)	± 0.4%	输出电压 (Output Voltage)	12-110V
温度变化率 (Temperature Coefficient)	± 0.02%/°C	功率 (Power)	800-2000W
电流限制点 (Output Current Limiting)	120%(Typ)		

一般特性 General Characteristic

工作频率 (Switching Frequency)	120	KHZ	环境特性(Environmental Characteristics)	工作壳温 (Case Temperature)	-25 - +85°C
隔离电阻 (Isolation Resistance)	200	M Ω			-40 - +85°C
MTBF	>200000	h			-55 - +85°C
绝缘强度(Isolation Voltage)				存储温度 (Storage Temperature)	-45 - +105°C
输入 - 输出 (Input-output)	>1500 VAC/1min(漏电流<5mA)				-55 - +105°C
输入 - 外壳 (Input-Case)	>1500 VAC/1min(漏电流<5mA)				
输出 - 外壳 (Output-Case)	>500 VDC/1min				

热阻特性 Heat Characteristic

冷却方式 (Cooling)	热阻 (Thermal Resistance)
自然风冷 (Breeze of Nature)	0.20°C/W
0.5M/S	0.17°C/W
1M/S	0.13°C/W
1.5M/S	0.09°C/W
2M/S	0.07°C/W

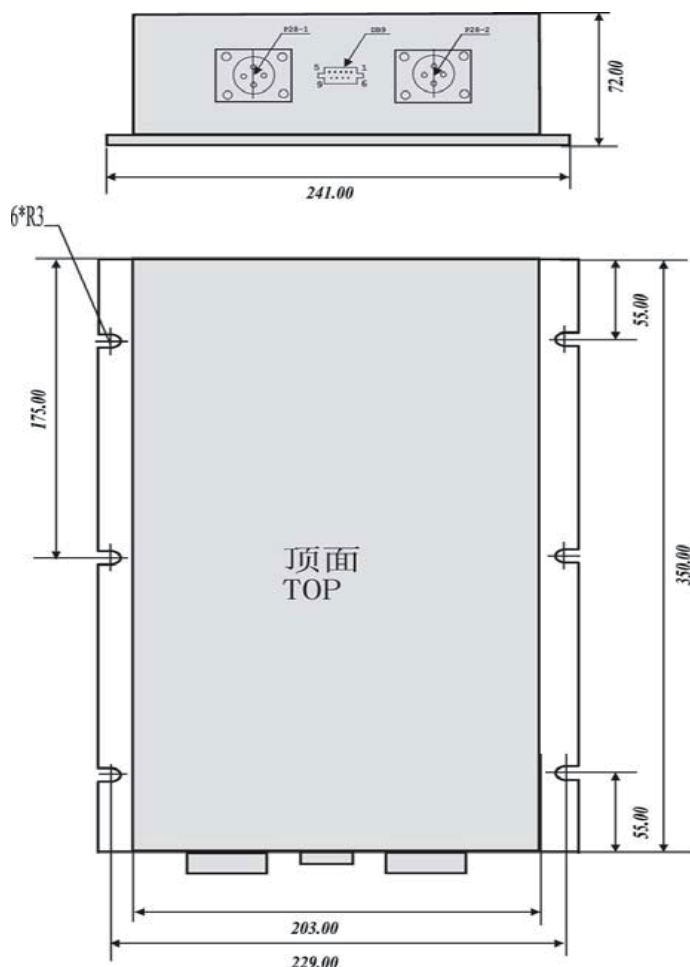
型号 Models

输入电压(Vac) Input voltage	输入电压(范围) Input voltage<Range>	输出电压 (Vdc) Output voltage	输出电流 (A) Output current	纹波pk-pk(mv) Ripple and noise	效率 (Typ) Efficiency	型号 Models	
单 路	220	176-264	12	66.67	120	85%	JFB800-220S12
	220	176-264	15	53.33	150	85%	JFB800-220S15
	220	176-264	24	41.67	200	86%	JFB1000-220S24
	220	176-264	24	62.5	200	86%	JFB1500-220S24
	220	176-264	28	53.57	280	86%	JFB1500-220S28
	220	176-264	48	20.83	400	87%	JFB1000-220S48
	220	176-264	48	41.67	400	87%	JFB2000-220S48
	220	176-264	110	13.64	800	87%	JFB1500-220S110

■说明：仅列出典型型号，其它型号，请确定功率、输入电压及输出电压，致电我公司。

Only typical models listed. If you need other model, please conform the power, input voltage and output voltage, then phone us.

外型尺寸与引脚定义 Mechanical drawing and pin definition



单位 (Unit) :mm

P28-1	
引脚 PIN	单路 SING
1	NC
2	AC
3	AC
4	Gr.

P28-2	
引脚 PIN	单路 SING
1	+Vo
2	+Vo
3	-Vo
4	-Vo

AC/DC